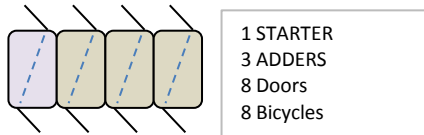
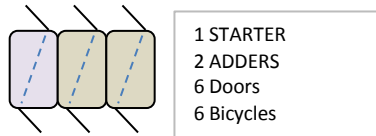
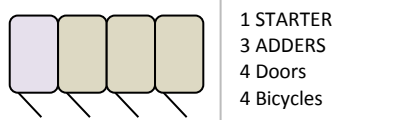
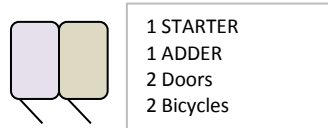
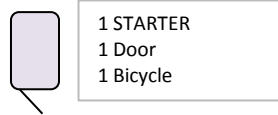


# LOCKER SELECTION MATRIX

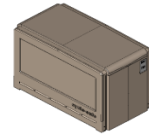
## DOUBLE SIDED LOCKERS



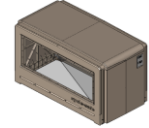
## SINGLE SIDED LOCKERS



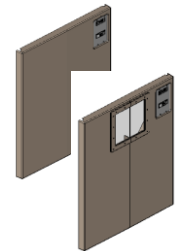
STARTER w/  
Standard Side



STARTER w/  
View Thru Side

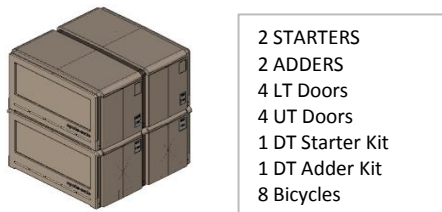
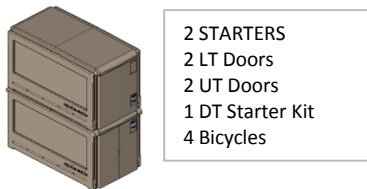


STARTER &  
ADDER w/  
Standard Side



STANDARD DOOR or  
VIEW THRU DOOR  
w/ Window

## UPPER TIER LOCKERS (Includes Double Sided and Single Sided Lockers)



## THE LOCKER CONFIGURATIONS ALLOW AS

**1. Select STARTER UNIT (Single or Double Sided). Determine number of bicycles to park. Determine PLAIN STANDARD END or VIEW THRU (End Panels with Windows).**

**2. Determine number of ADDER UNITS needed (Based on number of bicycles to park). Select Double Sided or Single Sided based on the Starter Unit style from Step-1.**

**3. Select the DOOR STYLE and quantity needed. Determine STANDARD or VIEW THRU DOOR and LOCKING STYLE. 2-door units need 2 doors. 1-door units need 1 door. UPPER TIER units need UT doors.**

**4. Select UPPER TIER units based on the Starter/Adder selection from Step-1 & -2. Select STARTER & ADDER Double Tier Kits for each UT Locker. UT locker qty must be the same as the LT locker qty.**

SWING HANDLE  
LATCH



STANDARD T-  
HANDLE LOCK  
or  
MASTER KEY T-  
HANDLE LOCK



ELECTRONIC  
ACCESS LOCK



## EXTENSION BICYCLE LOCKER

