



SARIS
INFRASTRUCTURE

WALL MOUNT WORK STAND
INSTALLATION MANUAL

Customer Service
800.783.7257
sarisinfrastucture.com

Tell Us What You Think



**[sarisinfrastructure.com/
wallmountworkstand](https://sarisinfrastructure.com/wallmountworkstand)**



**Register your product for updates
sarisinfrastructure.com/registration**

Thanks for buying our Wall Mount Work Stand!

You're now the proud owner of the Saris Infrastructure Wall Mount Work Stand!

Made in the USA, this space saving bike repair station combines form and function with ADA compliance in mind. The optional ADA compliance Wall Plate provides the required cane detection function which makes this product ideal for public spaces.

Pair the Wall Mount Work Stand with any of our bike pumps to create a full service public use repair station that helps get cyclists back on the road with a dialed ride.

Please read and understand these instructions before beginning installation.

Everyone here at Saris Infrastructure want you to be happy with this product. Please contact us sales@sarisinfrastructure.com or 800-783-7257 should you need anything.

Now, let's get started.

Tools Needed

Drill and drill bits (mounting hardware dependent)
Phillips Screwdriver
Mounting Hardware (location dependent)
Penta Nut Socket (included)
3/8" drive ratchet
Marker or Pencil
Level
Tape Measure

Recommended Setbacks:

See Figure 1 below for minimum space requirements. It is possible to mount a manual or electric pump within this setback region as well.

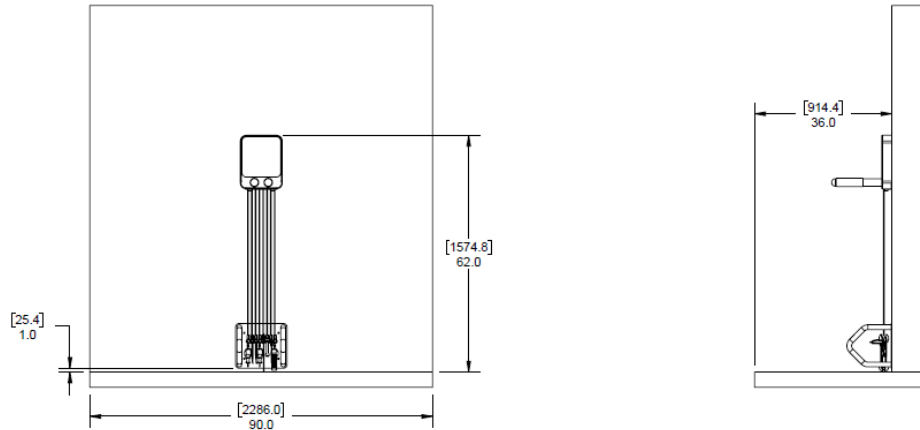
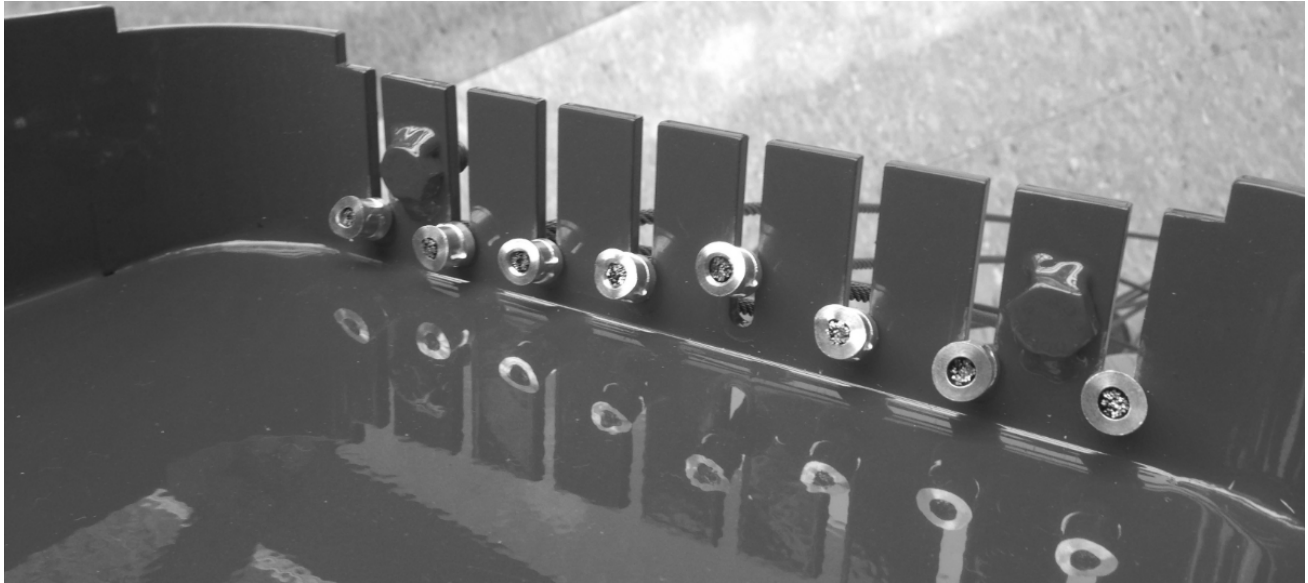


Figure 1: Setbacks

Wall Mounting Instructions

1. Identify mounting location and be sure to follow recommended setbacks. The top of the work stand should be mounted at 62" (157.5cm) from the ground. If installing on a vending machine, mount in a position that does not inhibit the door opening (we usually mount on the left side of the machine).
2. Choose appropriate fasteners for your mounting surface.
 - a. If mounting to sheet metal, we recommend using #14 sheet metal screws no longer than 3/4" (20mm). If mounting into concrete, we recommend using a 1/4" masonry screw.
 - b. If mounting into wood framing, we recommend using #14 wood screws.
 - c. If installing into drywall, we recommend drywall toggle anchor (typically rated to 100+ lbs. each) that uses at least a #12 screw size (and installing all 4).
 - d. If installing into a stud wall, it is possible to use a #14 wood into 1 stud and toggle anchors into the other 2 holes that do not line up with a stud.

3. Once the back plate is secured, load the tools to the front cover as shown.



4. Lift the front cover onto the back plate so that the tabs fit into the slots.



5. Install and tighten penta nuts to approximately 5-6 Nm. Be careful not to over tighten.

Optional ADA compliance wall plate

For some locations, it may be necessary to install the optional ADA compliance wall plate. This plate also protects the wall from tool damage.

1. Locate the wall plate directly below the work stand at a distance of 1" (2.54cm) off the floor.
2. If mounting to sheet metal, we recommend using #14 sheet metal screws no longer than 3/4" (20mm). If mounting into concrete, we recommend using a 1/4" masonry screw. If mounting into wood framing, we recommend using #14 wood screws.



WARNING: Manufacturer and seller expressly disclaim any and all liability for personal injury, property damage or loss, whether direct, indirect, or incidental, resulting from the incorrect attachment or inappropriate placement, improper use, inadequate maintenance, or neglect of this product. Placement of this product is beyond control of the manufacturer. It is the end users reasonability to place this product so as to avoid potential pedestrian or playground accidents.

WARRANTY: We warrant this product to the first consumer to be free from defect in material and workmanship for a period of one year from date of purchase. Please retain your sales slip for your records. Any product or part thereof found to be defective within that period will be replaced without charge provided that: (1) the product was not misused; (2) no alterations or modifications were made; (3) its failure resulted from a defect in material or workmanship and not from normal wear expected in the use of the product; (4) the product or part is delivered, freight prepaid, to Saris Products.

Manufacturer's only obligation shall be to replace such products or parts proved to be defective.